

12-19-2005

Suwannee River Basin
TMDL Implementation Plan
Mill Creek /Alpaha River Watershed
Stream Approach
HUC10 # 0311020201
Reach ID: R031102020102

This document has been requested. Please see watershed approach below.

**STATE OF GEORGIA
TMDL IMPLEMENTATION PLAN
WATERSHED APPROACH
Suwannee River Basin**

Local Watershed Governments
Heart of Georgia-Altamaha RDC
Wilcox County
City of Rochelle

TMDL Implementation Plans are platforms for establishing a course of actions to restore the quality of impaired water bodies in a watershed. They are intended as a continuing process that may be revised as new conditions and information warrant. Procedures will be developed to track and evaluate the implementation of the management practices and activities identified in the plans. Once restored, appropriate management practices and activities will be continued to maintain the water bodies.

With input from appropriate stakeholder groups, a TMDL Implementation Plan has been developed for a cluster of impaired streams and the corresponding pollutants. The impaired streams are located in the same sub-basin identified by a HUC10 code (Figure 1).

This Implementation Plan addresses an action plan, education/outreach activities, stakeholders, pollutant sources, and potential funding sources affecting the sub-basin. In addition, the Plan describes (a) regulatory and voluntary practices/control actions (*management measures*) to reduce target pollutants, (b) milestone schedules to show the development of the management measures (*measurable milestones*), (c) a monitoring plan to determine the efficiency of the management measures and measurable milestones, and (d) criteria to determine whether substantial progress is being made towards reducing pollutants in impaired waterbodies. The overall goal of the Plan is to define a set of actions that will help achieve water quality standards in the state of Georgia. Following this section is information regarding individual segments.

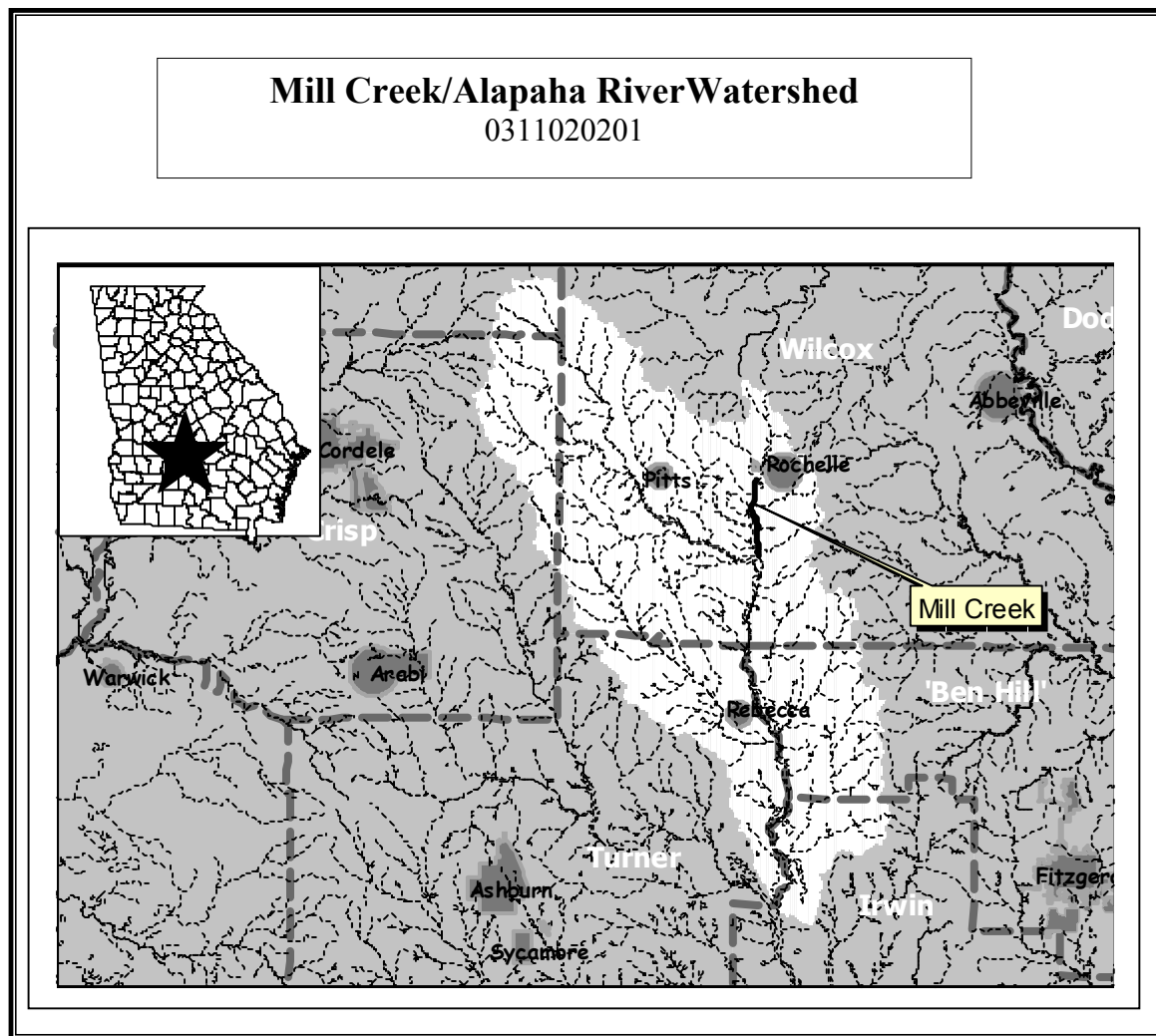


FIGURE 1

Impaired Waterbody*	Impaired Stream Location	Impairment
1. Mill Creek	Reynolds Creek to Alapaha River	Dissolved Oxygen

*These Waterbody Numbers are referenced throughout the Implementation Plan.

POLLUTANT:	SOURCE:	EFFECT:	WHAT CAN I DO?	
			At Home: Community, School	At Work: Business, Government
<input checked="" type="checkbox"/> Dissolved Oxygen (DO)	<input checked="" type="checkbox"/> Industrial	<input type="checkbox"/> Habitat	Get Involved in Adopt-A-Stream Public Education Use Proper BMPs Check Septic System	Develop Zoning Ordinances Dispose of Harmful Chemicals Properly
<input type="checkbox"/> Fecal Coliform (FC)	<input checked="" type="checkbox"/> Urban	<input type="checkbox"/> Recreation		
<input type="checkbox"/> Sediment	<input checked="" type="checkbox"/> Agriculture	<input type="checkbox"/> Drinking Water		
<input type="checkbox"/> Metals	<input checked="" type="checkbox"/> Forestry	<input type="checkbox"/> Aesthetics		
<input type="checkbox"/> Fish Consumption Guidelines (FCG)	<input type="checkbox"/> Residential	<input checked="" type="checkbox"/> Other (Please List)		
<input type="checkbox"/> Other (Please List)	<input type="checkbox"/> Other (Please List)	Fishing		

INFORMATION/EDUCATION/OUTREACH ACTIVITIES

An education/outreach component will be used to enhance public understanding of and participation in implementing the TMDL Implementation Plan.
List of all previous and planned information/education/outreach activities.

Responsible Organization Or Entity	Description	Impacted Waterbodies*	Target Audience	Anticipated Dates (MM/YY)
Heart of Georgia Altamaha RDC	TMDL Presentation at the City of Rochelle City Council Chambers for the committee and landowners	Mill Creek	Landowners with 500 Acres or more within 2 miles on either side of Mill Creek in Wilcox Co., GA and Local Governments, GA Forestry Commission, Ocmulgee Soil and Water Conservation District, Agriculture Organizations, Natural Resource Conservation Service, DHR South Central Health District, Pine Country RC & D, Forestry Industries, Altamaha RiverKeeper, Wilcox Co. Farm Bureau	November 21, 2002
Heart of Georgia Altamaha RDC	Press Release to The Cordele Dispatch	Mill Creek	General Public	December 4, 2002
Heart of Georgia Altamaha RDC	A Public Service Announcement to WQSY (103.9 FM) in Hawkinsville, GA	Mill Creek	General Public	December 6-10, 2002
Heart of Georgia Altamaha RDC	TMDL Presentation for Public Meeting at the Wilcox County Library in Abbeville, GA	Mill Creek	Landowners with 25 Acres or more within 2 miles on either side of Mill Creek in Wilcox County	December 10, 2002
Heart of Georgia Altamaha RDC	TMDL Presentation at City of Rochelle City Council Meeting	Mill Creek	City Officials	January 1, 2002*
Heart of Georgia Altamaha RDC	TMDL Presentation at Wilcox County Commissioners Meeting	Mill Creek	County Officials	January 7, 2002



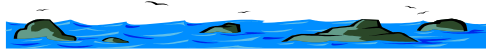
STAKEHOLDERS

EPD encourages public involvement and the active participation of stakeholders in the process of improving water quality. Stakeholders can provide valuable information and data regarding their community and the impaired water bodies and can provide insight and/or implement management measures.

List of local governments, agricultural organizations or significant landholders, commercial forestry organizations, businesses and industries, and local organizations including environmental groups and individuals with a major interest in this watershed.

Name/Organization	Address	City	State	Zip	Phone	E-Mail
Georgia Forestry Commission	Rt. 1 Box 67	Helena	GA	31037	(229)-868-5649	
Ocmulgee Soil and Water Conservation District	1375 Golden Rod Road	Rochelle	GA	31079	N/A	
Wilcox County Cooperative Extension Service	PO Box 218	Rochelle	GA	31079	(229)-365-2323	
Wilcox County Commission	103 North Broad Street	Abbeville	GA	31001	(229)-467-2737	
City of Abbeville	215 South Depot Street	Abbeville	GA	31001	(229)-467-3201	
City of Rochelle	PO Box 156	Rochelle	GA	31079	(229)-365-2244	
Natural Resource Conservation Service	209B West Union Street	Vienna	GA	31092	(229)-268-9106 x 3	
City of Pineview	PO Box 127	Pineview	GA	31071	(229)-624-2422	
DHR South Central Health District	2121-B Bellevue Road	Dublin	GA	31021-2998	(912)-275-6618	
Pine Country RC & D	105 Martin Luther King Drive	Soperton	GA	30457	(912)-529-6652	
Rayonier Southeast Forest Products	PO Box 626	Jesup	GA	31598	(912)-427-5280	
Altamaha RiverKeeper	PO Box 2642	Darien	GA	31305	(912)-437-8164	
Cattleman's Association	3007 American Legion Road	Abbeville	GA	31001	N/A	
Wilcox County Farm Bureau	1982 Mathews Road	Abbeville	GA	31001	(229)-365-2228	

WATER BODIES/STREAMS COVERED IN THIS PLAN:



These impaired streams are located in the same sub-basin identified by a HUC10 code. Most of the information contained in this section comes from the 303(d) list and has been completed by employees of the EPD Water Protection Branch. Data that placed stream on 303(d) list will be provided upon request.

Waterbody Name #1	Location	Miles/Area Impacted	Use Classification	Partially Supporting/ Not Supporting (PS/NS)
Mill Creek	Reynolds Creek to Alapaha River	3	Fishing	NS
Primary County	Secondary County	Second RDC	Source (Point/ Nonpoint)	
Wilcox			Nonpoint	
Pollutants	Water Quality Standards	Required Reduction	TMDL ID	Date TMDL Established
Dissolved Oxygen	Natural DO = 2.35 mg/l at USGS station # 2315685	Reduce oxygen demanding materials by 25%		December 2001

POLLUTANT SOURCES



It is important to recognize the potential source(s) causing water quality impairment. Each source must be controlled to comply with target TMDL/Load Allocations for each pollutant. Included is a description of how the sources contribute to the impairment and the waterbody that is impaired.

List of major nonpoint source categories and sub-categories or individual sources (Urban Runoff, Agriculture, Forestry, Municipal Sewage Treatment Plant)

Pollutant	Sources of Pollutants	Description of Contribution To Impairment	Impacted Waterbodies*
Dissolved Oxygen	Agriculture	Possible introduction of animal waste from upslope practices and sediment from storm water runoff when BMPs are not followed	Mill Creek
Dissolved Oxygen	Forestry	Possible introduction of sediment and plant debris resulting from timber practices when BMPs are not followed	Mill Creek
Dissolved Oxygen	Municipal (Storm water Runoff)	Possible introduction of storm water runoff from municipal areas (City of Rochelle)	Mill Creek
Dissolved Oxygen	Urban	Possible introduction of water runoff from urban development in and near Rochelle	Mill Creek
Dissolved Oxygen	Industrial	Possible introduction of point source(s) generated runoff from fertilizer plant and/or former chemical plant	Mill Creek



MANAGEMENT MEASURES, MEASURABLE MILESTONES AND SCHEDULE

(i.e. Local codes and ordinances, Erosion and Sedimentation Control, Storm Water Management, Local water resource monitoring)

The following table lists management measures that have been or will be implemented to achieve water quality standards and the load reductions established in the TMDL. The management measures, including regulatory or voluntary actions or other controls by governments or individuals, specifically apply to the pollutant and the waterbody for which the TMDL was written. A description is provided of how these management measures are/will be accomplished through reliable and effective delivery mechanisms, and how these management measures are/will help achieve the target TMDL. Included is the source of the pollutant, anticipated/past effectiveness of the management measure (very effective, somewhat effective, not effective), the current status (i.e. enforced, in-progress, planning), and measurable milestones and schedule. Milestones are used to measure progress in attaining water quality standards and to determine whether management measures are being implemented.

Regulation/Ordinance or Management Measure	Responsible Government, Organization or Entity	Description	Enacted/ Projected Date	Status	Regulatory/ Voluntary
Georgia Water Quality Control Act (OCGA 12-5-20)	Georgia DNR, EPD	Makes it unlawful to discharge excessive pollutants into waters of the state in amounts harmful to public health, safety or welfare, animals, or the physical destruction of stream habitat	1964	Current	Regulatory

Pollutant(s) Affected	Sources of Pollutant(s)	Impacted Waterbodies*	Anticipated or Past Effectiveness
Dissolved Oxygen	Agriculture, Municipal, Forestry, Industrial	Mill Creek	Effective in point source pollution in dealing with local governments and industry/ Limited effectiveness in dealing with non-point sources

Measurable Milestones	Schedule		Comments
	Start	End	
Land Use Application System Permits NPDES Permits	1964	Ongoing	Work with local governments and others to increase monitoring of Land Use Application System Permits and NPDES Permits

Regulation/Ordinance or Management Measure	Responsible Government, Organization or Entity	Description	Enacted/ Projected Date	Status	Regulatory/ Voluntary
Forestry Water Quality Program	Georgia Forestry Commission	Designated by EPD to lead the effort to develop BMP's, educational BMP programs, forestry complaint resolution process and BMP monitoring, conducts biennial BMP monitoring, complaint investigation and mediation	1999 Manual	Current	Voluntary

Pollutant(s) Affected	Sources of Pollutant(s)	Impacted Waterbodies*	Anticipated or Past Effectiveness
Dissolved Oxygen	Preharvesting planning, road management, harvesting, forest chemical management	Mill Creek	Established BMPs Effective in limiting runoff and less effective in limiting debris associated with timber practices

Measurable Milestones	Schedule		Comments
	Start	End	
Harvesting in SMZ's, Mechanical Site Preparation, Chemical Site Preparation, Fertilization, Firebreaks, Skid Trail Stream Crossings/Road Crossings, Logging Roads	1999 Manual	Ongoing	Additional installation of BMPs possible, depending on future monitoring results

Regulation/Ordinance or Management Measure	Responsible Government, Organization or Entity	Description	Enacted/ Projected Date	Status	Regulatory/ Voluntary
Agricultural BMP's	Georgia Soil and Water Conservation Service, Georgia Department of Agriculture	Leads effort in agricultural water quality program, develops agricultural BMP educational and monitoring efforts	1987	Current	Voluntary

Pollutant(s) Affected	Sources of Pollutant(s)	Impacted Waterbodies*	Anticipated or Past Effectiveness
Dissolved Oxygen	Pesticide management, animal facility runoff, irrigation water management	Mill Creek	Utilization of BMPs has been found to be effective in controlling runoff and other contaminants from farming practices

Measurable Milestones	Schedule		Comments
	Start	End	
Waste Storage Structure, Conservation Tillage, Waste Storage Pond, Diversion, Fencing, Field Borders, Filter Strips, Stock Trails/Walkways, Stream/Shoreline Protection, Nutrient Management, Well Protection, Land Use Application System Permits and NPDES Permits	1987	Ongoing	Additional BMPs possible depending on results of future monitoring/ Work with local governments and others to increase monitoring of Land Use Application System Permits and NPDES Permits

Regulation/Ordinance or Management Measure	Responsible Government, Organization or Entity	Description	Enacted/ Projected Date	Status	Regulatory/ Voluntary
Nutrient Application Plan	Natural Resource Conservation Service	Leads effort in agricultural water quality by developing plans to control nutrient runoff	2000	Current	Voluntary

Pollutant(s) Affected	Sources of Pollutant(s)	Impacted Waterbodies*	Anticipated or Past Effectiveness
Dissolved Oxygen	Pesticide management, irrigation water management	Mill Creek	Effective in the initial stages of the program's beginning if plans are followed properly

Measurable Milestones	Schedule		Comments
	Start	End	
Increase the number of farming establishments utilizing nutrient application plans to limit nutrient runoff	2000	Ongoing	Plans will continue to be effective at the local level if they continue to be implemented by more and more farming establishments

Regulation/Ordinance or Management Measure	Responsible Government, Organization or Entity	Description	Enacted/ Projected Date	Status	Regulatory/ Voluntary
Georgia Planning Act (OCGA 12-2-8)	Georgia Department of Natural Resources and Local Governments	Authorized DCA to develop minimum planning standards and procedures that local government planning and zoning jurisdictions could adopt and enforce pertaining to the protection of river corridors, mountains, water supply watersheds, groundwater recharge areas, and wetlands	1989	Current	Regulatory

Pollutant(s) Affected	Sources of Pollutant(s)	Impacted Waterbodies*	Anticipated or Past Effectiveness
Dissolved Oxygen	Agricultural, Municipal	Mill Creek	Effectiveness is minimal because of lack of land use management regulations at the local level

Measurable Milestones	Schedule		Comments
	Start	End	
Land Use Management Regulations	2003	Ongoing	Need to work with local governments to establish land use management regulations and other regulations as appropriate/ Need to work with local governments in enforcing DNR's Part 5 Environmental Planning criteria to better protect local streams

Regulation/Ordinance or Management Measure	Responsible Government, Organization or Entity	Description	Enacted/ Projected Date	Status	Regulatory/ Voluntary
Georgia Erosion and Sedimentation Control Act (OCGA 12-7-1)	Georgia Department of Natural Resources Environmental Protection Division and Local Governments	Authorizes local governments to adopt a comprehensive ordinance governing land-disturbing activities within local planning and zoning jurisdictions and require the use of BMPs	Amended 2000	Current	Regulatory

Pollutant(s) Affected	Sources of Pollutant(s)	Impacted Waterbodies*	Anticipated or Past Effectiveness
Dissolved Oxygen	Agricultural, Industrial	Mill Creek	Effectiveness is minimal due to a lack of local enforcement of erosion and sedimentation control measures

Measurable Milestones	Schedule		Comments
	Start	End	
Local erosion and sedimentation control measures	2003	Ongoing	Work with local governments to obtain a greater enforcement of erosion and sedimentation control measures at the local level

Regulation/Ordinance or Management Measure	Responsible Government, Organization or Entity	Description	Enacted/ Projected Date	Status	Regulatory/ Voluntary
Land Use Management Regulations	Heart of Georgia Altamaha Regional Development Center, Local Governments, Georgia Department of Natural Resources, Georgia Department of Human Resources, Georgia Department of Community Affairs, Georgia Forestry Commission	Utilize state-mandated environmental planning criteria, local planning and zoning ordinances, BMP's for agricultural and forestry, and septic tank permitting to manage runoff and development, RDC will provide technical assistance in developing a model "zoning-lite" ordinance to encourage local governments to implement planning and zoning measures	Adopted on a County-by-County basis	Planned	Regulatory

Pollutant(s) Affected	Sources of Pollutant(s)	Impacted Waterbodies*	Anticipated or Past Effectiveness
Dissolved Oxygen	Agricultural, Forestry,	Mill Creek	Not very effective due to lack of Land Use Regulations on county-wide level

Measurable Milestones	Schedule		Comments
	Start	End	
Establishment of County-wide Land Use Regulations	2008	Ongoing	There is a need to work with local governments to adopt Land Use Regulations

Regulation/Ordinance or Management Measure	Responsible Government, Organization or Entity	Description	Enacted/ Projected Date	Status	Regulatory/ Voluntary
Cooperative Monitoring Program	Georgia Department of Natural Resources, Georgia Environmental Protection Division, Local Governments, Heart of Georgia Altamaha Regional Development Center	Seek a scientific study of issues such as natural dissolved oxygen levels in slow-moving streams, could seek funding/cooperation for watershed assessments including possible model demonstration assessments for small watersheds, develop a program for implementation assessments for entire Mill Creek Watershed Cluster		Planned	Voluntary

Pollutant(s) Affected	Sources of Pollutant(s)	Impacted Waterbodies*	Anticipated or Past Effectiveness
Dissolved Oxygen	Agricultural, Forestry	Mill Creek	Anticipated effectiveness is significant because of more frequent monitoring which will produce better and more frequent data

Measurable Milestones	Schedule		Comments
	Start	End	
Implementation of Adopt-A-Stream programs with various organizations for purposes of more sampling/Additional monitoring to increase the amount of data collected	2003	Ongoing	Utilize monitoring programs of Georgia Forestry Commission, NRCS, Adopt-A-Stream to gather updated sampling data on a more frequent basis

Regulation/Ordinance or Management Measure	Responsible Government, Organization or Entity	Description	Enacted/ Projected Date	Status	Regulatory/ Voluntary
Environmental Code Enforcement	Local Governments, Department of Natural Resources, Environmental Protection Division	Utilize local ordinances to ensure greater compliance with state environmental codes at the local level	2008	Planned	Regulatory

Pollutant(s) Affected	Sources of Pollutant(s)	Impacted Waterbodies*	Anticipated or Past Effectiveness
Dissolved Oxygen		Mill Creek	Limited effectiveness due to lack of enforcement at county-wide level

Measurable Milestones	Schedule		Comments
	Start	End	
Establishment of code enforcement program	2008	Ongoing	Greater enforcement of state standards at the local level could help to reduce the amount of man made wastes entering into local streams

Regulation/Ordinance or Management Measure	Responsible Government, Organization or Entity	Description	Enacted/ Projected Date	Status	Regulatory/ Voluntary
Clean Water Act, Section 404 CFR Part 232.3 (Pine Plantation Regulations)	US EPA, Army Corps of Engineers	Requires normal forestry practices to adhere to BMPs and 15 baseline provisions for forest road construction and maintenance in and across waters of the U.S., including lakes, rivers, perennial and intermittent streams, wetlands, sloughs, and natural ponds in order to qualify for the silvicultural exemption from the permitting process	1988	Current	Regulatory

Pollutant(s) Affected	Sources of Pollutant(s)	Impacted Waterbodies*	Anticipated or Past Effectiveness
Dissolved Oxygen	Forestry	Mill Creek	Significantly effective in controlling runoff in silviculture practices

Measurable Milestones	Schedule		Comments
	Start	End	
Installation of additional BMPs/Increase compliance with BMPs and education by Georgia Forestry Commission and industrial forestry companies	2008	Ongoing	Based on future monitoring results, additional BMPs may be required

Regulation/Ordinance or Management Measure	Responsible Government, Organization or Entity	Description	Enacted/ Projected Date	Status	Regulatory/ Voluntary
Federal Farm Bill	U.S. Department of Agriculture	Prohibits landowners from converting forested wetlands to agricultural uses (swampbuster)		Current	Voluntary

Pollutant(s) Affected	Sources of Pollutant(s)	Impacted Waterbodies*	Anticipated or Past Effectiveness
Dissolved Oxygen	Forestry	Mill Creek	Effective in leaving forested wetlands in their natural state

Measurable Milestones	Schedule		Comments
	Start	End	
Increase number of farmers utilizing incentive programs to keep forested wetlands in their natural state	1940's	Ongoing	Legislative updates should continue to increase program incentives

Regulation/Ordinance or Management Measure	Responsible Government, Organization or Entity	Description	Enacted/ Projected Date	Status	Regulatory/ Voluntary
Standards of Practice (OCGA 43-1-19)	Georgia State Board of Registration for Foresters	Failure to practice professional forestry in accordance with generally accepted standards of practices (includes BMPs) shall constitute unprofessional conduct and shall be grounds for disciplinary action	1993	Current	Regulatory

Pollutant(s) Affected	Sources of Pollutant(s)	Impacted Waterbodies*	Anticipated or Past Effectiveness
Dissolved Oxygen	Forestry	Mill Creek	Effective in ensuring professional standards of forestry practices

Measurable Milestones	Schedule		Comments
	Start	End	
Keeping professional standards updated and enforced	1993	Ongoing	Standards need to be closely monitored and continuously enforced to ensure professional conduct

Regulation/Ordinance or Management Measure	Responsible Government, Organization or Entity	Description	Enacted/ Projected Date	Status	Regulatory/ Voluntary
Forestry BMPs	Georgia Forestry Commission	BMP Categories include Harvesting in SMZ's, Mechanical Site Preparation, Chemical Site Preparation, Fertilization, Firebreaks, Skid Trail Stream Crossings and Road Crossings, Logging Roads	1999	Current	Voluntary

Pollutant(s) Affected	Sources of Pollutant(s)	Impacted Waterbodies*	Anticipated or Past Effectiveness
Dissolved Oxygen	Forestry	Mill Creek	Somewhat Effective but could be more so with increased utilization by farming establishments

Measurable Milestones	Schedule		Comments
	Start	End	
Continuous installation of new BMPs as appropriate	1999	Ongoing	Need for monitoring of BMPs to monitor utilization and effectiveness/Need for continued and stronger industry enforcement

Regulation/Ordinance or Management Measure	Responsible Government, Organization or Entity	Description	Enacted/ Projected Date	Status	Regulatory/ Voluntary
Storm water Management Regulations	Georgia Department of Natural Resources, Environmental Protection Division, and Local Governments	Utilize local ordinance enforcement to produce better erosion/sedimentation control at the time of construction, could possibly require post-construction erosion/sedimentation control, could use passive design elements in new developments and stream buffers to prevent runoff	Adopted on a County-by-County basis	Planned	Regulatory

Pollutant(s) Affected	Sources of Pollutant(s)	Impacted Waterbodies*	Anticipated or Past Effectiveness
Dissolved Oxygen	Municipal, Industrial	Mill Creek	Limited Effectiveness due to lack of erosion and sedimentation regulations

Measurable Milestones	Schedule		Comments
	Start	End	
File for NPDES general land disturbance permit/ Phase II General Industrial Permits	2003	Ongoing	ISTEA Exemption ends for all local governments in March 2003/All cities and counties will need to file Notices of Intent by this date

Regulation/Ordinance or Management Measure	Responsible Government, Organization or Entity	Description	Enacted/ Projected Date	Status	Regulatory/ Voluntary
NPDES (National Discharge Elimination System) Permits	Georgia Department of Natural Resources Environmental Protection Division and Local Governments	Regulates facilities that are allowed to discharge treated wastewater into surface water	Unknown	Current	Regulatory

Pollutant(s) Affected	Sources of Pollutant(s)	Impacted Waterbodies*	Anticipated or Past Effectiveness
Dissolved Oxygen	Rochelle-Northwest WPCP, Rochelle-Southwest WPCP	Mill Creek	Effectiveness is greater with governments and larger industries/ Less effective with smaller entities

Measurable Milestones	Schedule		Comments
	Start	End	
State monitoring and renewal	2000	Ongoing	Rochelle-Northwest WPCP Permit (#GA0024244) Rochelle-Southwest WPCP Permit (#GA0024236) Closer monitoring and enforcement of regulations would make the permit more effective



POTENTIAL FUNDING SOURCES

of the above-mentioned management measures.

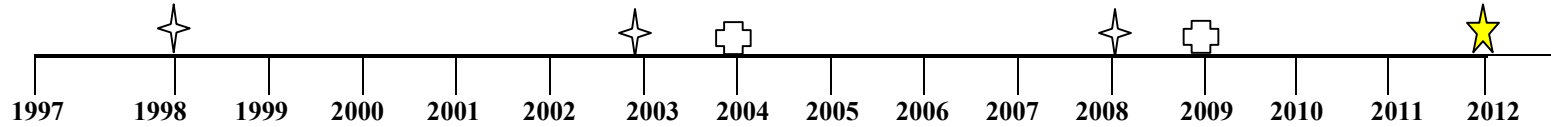
The identification and discussion of dedicated funding is important in determining the economic feasibility

Funding Source	Responsible Authority	Status	Anticipated Funding Amount	Impacted Waterbodies*
Georgia Forestry Commission	Georgia Forestry Commission	Current	Unknown	Mill Creek
Georgia Department of Natural Resources	Environmental Protection Division	Current	\$75,000.00	Mill Creek
U.S. Environmental Protection Agency	U.S. Environmental Protection Agency	Planned	Unknown	Mill Creek
U.S. Department of Agriculture	Farm Service Agency	Planned	Unknown	Mill Creek
U.S. Department of Agriculture	Natural Resource Conservation Service	Planned	Unknown	Mill Creek
U.S. Fish and Wildlife Service	Georgia Soil and Water Conservation Service (“Partners for Wildlife” Program)	Planned	Unknown	Mill Creek
University of Georgia Extension Service	Local Cooperative Extension Service (Home*A*Syst Program)	Planned	Unknown	Mill Creek
University of Georgia Extension Service	Local Cooperative Extension Service (Farm*A*Syst Program)	Planned	Unknown	Mill Creek
State Implementation Committee	Sustainable Forestry Initiative Program	Planned	Unknown	Mill Creek



PROJECTED ATTAINMENT DATE

The projected date to attain and maintain water quality standards in this watershed is 10 years from acceptance of the TMDL Implementation Plan by EPD.



- EPD Monitoring
- Evaluate TMDL & Attainment Date
- Project Attainment



MONITORING PLAN

The purpose of this monitoring plan is to determine the effectiveness of the target TMDL and the management measures being implemented to meet water quality standards. List of previous, current or planned/proposed sampling activities or other surveys. (Monitoring data that placed stream on 303(d) list will be provided if requested.)

Name Of Regulation / Ordinance Or Management Measure	Organization	Impacted Waterbodies*	Pollutants	Purpose/Description	Time Frame		Status (Previous, Current, Proposed)
					Start	End	
1998 Study	United States Geological Survey	Mill Creek	Dissolved Oxygen	To detect the levels of dissolved oxygen at the USGS Certified Station #02315685 (SR 112)	01/98	12/98	Previous
Best Management Practices Monitoring	Georgia Forestry Commission	Mill Creek	Dissolved Oxygen	Within the watershed, can conduct monthly aerial reconnaissance to identify recent forestry practices, conduct BMP audit, and make recommendations for remediation if problems are found		On-going	Current



CRITERIA TO DETERMINE WHETHER SUBSTANTIAL PROGRESS IS BEING MADE

The following set of criteria will be used to determine whether any substantial progress is being made towards reducing pollutants in impaired waterbodies and attaining water quality standards. Discussion on each criteria is recorded in the space provided. Additional relevant criteria are presented in comments.

Percent of concentration or load change (monitoring program) Install BMPS and reduce the amount by 10% by 2008 when USGS monitors and by 20% by 2012

If monitoring results show that it is unlikely that the TMDL will be adequate to meet water quality standards, revision of the TMDL may be necessary.

- Regulatory controls or activities installed (ordinances, laws) Work with local governments and individuals to install Erosion and Sedimentation Controls, Land Use Management Regulations (Development Regulations such as stream buffers, limited impervious cover, porous pavement materials, limited clearing, grading, and disturbance); BMPs, Storm Water Management, Code Enforcement, etc. to help reduce runoff and minimize land disturbance.

- Best management practices installed (agricultural, forestry, urban) Forestry- (Harvesting in Streamside Management Zones, Mechanical Site Preparation, Chemical Site Preparation, Fertilization, Firebreaks, Skid Trail Crossing and Road Crossings, Logging Roads) Agriculture – (Waste Storage Facilities, Conservation Tillage, Waste Storage Pond, Diversion, Fencing, Field Borders, Filter Strips, Stock Trails/Walkways

- Categorical change in classification of the stream (delisting the stream is the goal) Classification is proposed to remain fishing/ Delist from 303(d) list

COMMENTS

Attachments

- Appendix A – Mill Creek Watershed Proposed TMDL Implementation Plan Committee Meeting Invitation List (November 21, 2002)
- Appendix B – Mill Creek Watershed Proposed TMDL Implementation Plan List of Major Landowners Invited to Committee Meeting (November 21, 2002)
(Wilcox County)
- Appendix C – Mill Creek Watershed Proposed TMDL Implementation Plan Committee and Major Landowners Meeting Sign-in Sheet
(November 21, 2002)
- Appendix D – Mill Creek Watershed Proposed TMDL Implementation Plan Committee and Major Landowners Meeting Handout
(November 21, 2002)
- Appendix E – Stakeholder Notification List for Mill Creek Watershed Proposed TMDL Implementation Plan Public Meeting (December 10, 2002)
(Wilcox County)
- Appendix F – Press Release for Public Meeting for Mill Creek Watershed Proposed TMDL Implementation Plan in The Cordele Dispatch
(December 4, 2002)
- Appendix G – Public Service Announcement concerning Mill Creek Watershed Proposed TMDL Implementation Plan given to WQSY-FM (103.9 in Hawkinsville, GA) (December 6-10, 2002)
- Appendix H – Mill Creek Watershed Proposed TMDL Implementation Plan Public Meeting Sign-in Sheet (December 12, 2002)
- Appendix I – Mill Creek Watershed Proposed TMDL Implementation Plan Public Meeting Handout (December 12, 2002)

Prepared By:	Nicolas Overstreet
Agency:	Heart of Georgia Altamaha RDC
Address:	331 West Parker Street
City:	Baxley ST: GA ZIP: 31515
E-mail:	
Date Submitted to EPD:	Dec. 17, 2002

The preparation of this report was financed in part through a grant from the U.S. Environmental Protection Agency under the provisions of Section 106 of the Federal Water Pollution Control Act, as amended.

**Environmental Protection Division of the Department of Natural Resources,
State of Georgia.**

TOGETHER WE CAN MAKE A DIFFERENCE!

